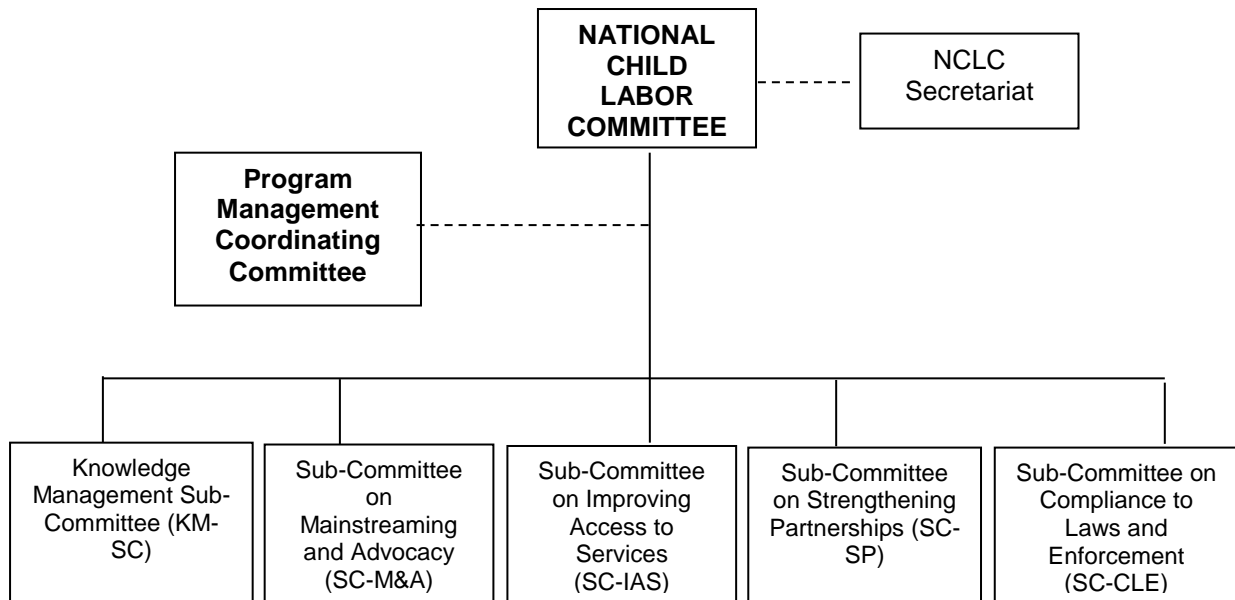


THE NATIONAL CHILD LABOR COMMITTEE (NCLC)

ORGANIZATIONAL STRUCTURE



POWERS AND FUNCTIONS

- Promulgate rules and regulations as may be necessary for the Committee to perform its mandate in accordance with law;
- Formulate policies, guidelines, framework, national action plans, and programs/projects as may be necessary for the effective enforcement of Republic Act No. 9231 and related laws;
- Coordinate and oversee the strict implementation by all concerned agencies and organizations of Republic Act No. 9231, the Philippine Program Against Child Labor, and such other related laws, programs and projects;
- Establish and maintain effective monitoring mechanisms to review and track progress to end child labor, especially in its worst forms, taking into account national action plans and other time-bound measures;
- Ensure the timely, coordinated, and effective response to child labor, including the creation of committees and/or working groups as may be needed;
- Ensure the creation and/or strengthening of Regional Child Labor Committees, Provincial Child Labor Committees, City/Municipal Child Labor Committees, Barangay Councils for the Protection of Children, or related structures, through provision of technical, administrative and resource assistance/support;
- Coordinate the conduct of advocacy campaign and massive information dissemination on the existence of Republic Act No. 9231 and related laws, and the various issues and problems attendant to child labor;

- Establish child-appropriate mechanisms, including conduct of capacity building activities for child laborers, their families and communities towards their meaningful participation and empowerment;
- Monitor the status of cases filed against individuals, agencies, institutions, or establishments that violate the provisions of Republic Act No. 9231 and related laws;
- Develop and maintain a knowledge and data management system on child labor that ensures the sharing of relevant data and information, fosters communication, improves program monitoring, and automates the child labor case referrals;
- Ensure the conduct of researches, studies, surveys and assessments on child labor, which shall be the basis for policy and program development and enhancement;
- Secure from any department, bureau, office, agency or instrumentality of the government or from non-government organizations and other civic organizations such assistance as may be needed to effectively implement the Committee's mandate and functions;
- Foster cooperation with international development agencies and other competent bodies as it may consider appropriate to provide expert advice on the implementation of the United Nations Convention on the Rights of the Child, ILO Convention 138, ILO Convention 182, Republic Act No. 9231, and related laws and instruments, in areas falling within the scope of their respective mandates;
- Accept donations, contributions, grants, bequests, or gifts from domestic or foreign sources, for purposes relevant to the Committee's mandate and functions, in accordance with applicable laws and rules and subject to government budgetary, accounting, and auditing rules and regulations; and
- Exercise all the powers and perform such other functions necessary to attain the purposes and objectives of Republic Act No. 9231 and related laws.

MEMBERSHIP

- Department of Labor and Employment
- Bureau of Workers with Special Concerns
- Bureau of Working Conditions
- Institute for Labor Studies
- Occupational Safety and Health Center
- Department of Agriculture
- Department of Education
- Bureau of Elementary Education
- Bureau of Secondary Education
- Bureau of Alternative Learning System
- Department of Health
- Department of the Interior and Local Government
- Department of Justice
- Department of Social Welfare and Development
- Council for the Welfare of Children
- National Economic and Development Authority
- National Youth Commission

- Philippine Information Agency
- Philippine Statistics Authority
- Employers Confederation of the Philippines
- Federation of Free Workers
- Trade Union Congress of the Philippines
- National Council of Social Development
- International Labour Organization
- United Nations Children's Fund

NCLC SUB-COMMITTEES

GENERAL FUNCTIONS OF ALL SUB-COMMITTEES:

- Review, monitor and evaluate the operationalization of the PPACL Plan of Action and address the identified gaps and issues;
- Improve the documentation and dissemination of stories of qualitative changes in the lives of child laborers, their families and communities;
- Facilitate sharing of available resources, expertise and good practices among social partners.

KNOWLEDGE MANAGEMENT SUB-COMMITTEE

Functions:

- Formulate research agenda for the PPACL to include mapping of resources, e.g., inter-agency structures, government agencies, workers' groups, employers' groups, non-government organizations, international organizations, donor organizations, etc.
- Establish reliable mechanism for master listing, data basing, and monitoring child laborers, families and communities
- Ensure broad and continuing dissemination of information about new legislation/policies, programs/projects/ activities, studies, researches, surveys and assessments
- Create mechanism for sharing information among and between sub-committees

Membership:

Chair: FFW

Vice-Chair: DOLE-BWSC

Members: OSHC, ILS, DSWD-PSB, CWC, NYC, PIA, PSA, ECOP, TUCP, ERDA, NCSD,
St. Scholastica's College Manila, UP Alpha Sigma, ILO-IPEC

SUB-COMMITTEE ON MAINSTREAMING AND ADVOCACY

Functions:

- Promote integrated advocacy and action against child labor
- Review existing policies and propose/ advocate/lobby for necessary measures in all levels
- Ensure integration of child labor issues and concerns in national and local development plans and related programs

Membership:

Chair: TUCP

Vice-Chair: PIA

Members: DOLE-BWSC, DOLE-LCO, ILS, DILG-NBOO, DILG-LGA, CWC, NYC, FFW, ECOP, NCSD, TEACHERS Inc., League of Vice-Governors of the Philippines, Vice-Mayors League of the Philippines, SIFI, Bantay Bata 163, Laura Vicuña Foundation, ILO-IPEC

SUB-COMMITTEE ON IMPROVING ACCESS TO SERVICES**Functions:**

- Ensure quality services are provided to child laborers and their families (e.g., education, health, healing and reintegration)
- Encourage participation of employers, workers, government agencies, non-government organizations, local government units and other groups in providing assistance to child laborers and their families
- Make available livelihood programs to parents/siblings of child laborers
- Facilitate access to economic services, such as micro-finance and markets

Membership:

Chair: ERDA

Vice-Chair: DSWD-PSB

Members: DA, DOLE-BWSC, DepEd-BEE, DepEd-BSE, DepEd-BALS, DOH, TUCP, FFW, ECOP, ERDA, NCSD, Laura Vicuña Foundation, Visayan Forum, World Vision, Unang Hakbang Foundation, ILO-IPEC

SUB-COMMITTEE ON STRENGTHENING PARTNERSHIPS**Functions:**

- Facilitate mobilization of broad-based alliance of stakeholders
- Identify mechanisms for harnessing partnerships and nurturing partners
- Provide support to the anti-child labor movement working towards child-sensitive families and communities
- Identify training needs and capacity building activities for stakeholders, policy makers, children's groups, program implementers and other social partners

Membership:

Chair: CWC

Vice-Chair: NCSD

Members: DOLE-BWSC, DepEd-BSE, DILG-NBOO, ECOP, FFW, TUCP, ERDA, Visayan Forum, Unang Hakbang Foundation, ILO-IPEC

SUB-COMMITTEE ON COMPLIANCE TO LAWS AND ENFORCEMENT**Functions:**

- Establish monitoring system on the implementation of international conventions/treaties and child labor-related laws and policies
- Ensure full enforcement of child labor laws and standards
- Establish mechanism for more effective workplace monitoring

Membership:

Chair: DOLE-BWC

Vice-Chair: PNP

Members: DOLE-BWSC, OSHC, DILG-NBOO, DOJ, DSWD-PSB, TUCP, FFW, ECOP, NBI,
ILO-IPEC